



AL FRANSI --- ALUMINUM



AL FARANSI COMPLEX FOR ALUMINUM
Pre- Qualification



WELCOME

Welcome to Al-Faransi Complex for Aluminum. Our skills with conducting Aluminum services aims to leave customers with an outstanding overall experience in all aspects from Aluminum doors & windows, Curtain walls, Cladding, etc. We have a variety of advanced machineries that help us in achieving the client's objectives while maintaining a safe work environment for our employees. We hope that you stop in our facility soon and as we always say "Aluminum is a one-stop solution"

Letter From Our CEO



I started Al-Faransi Comlex with a hope to use my knowledge and expertise in aluminum to achieve corporate success. As time went by, this hope turned into a dream. A dream to create, fabricate and install an easier life for our clients. As I grew, our knowledge and this company grew with me and gave us a famous lesson which is that nothing in life comes easy; nothing except aluminum. Aluminum taught us that you can have an easier life with just a simple material that is abundant everywhere around this planet. We started to learn more and more about aluminum and with everything we learnt, more doors and windows opened up for us (literally). However, the most important thing that we obtained throughout the journey were our values and standards of excellence. Because even though "good" is good enough for some people, excellence is only what's good enough for us.

Mohammad K. Tirani
Founder and CEO

PURPOSE

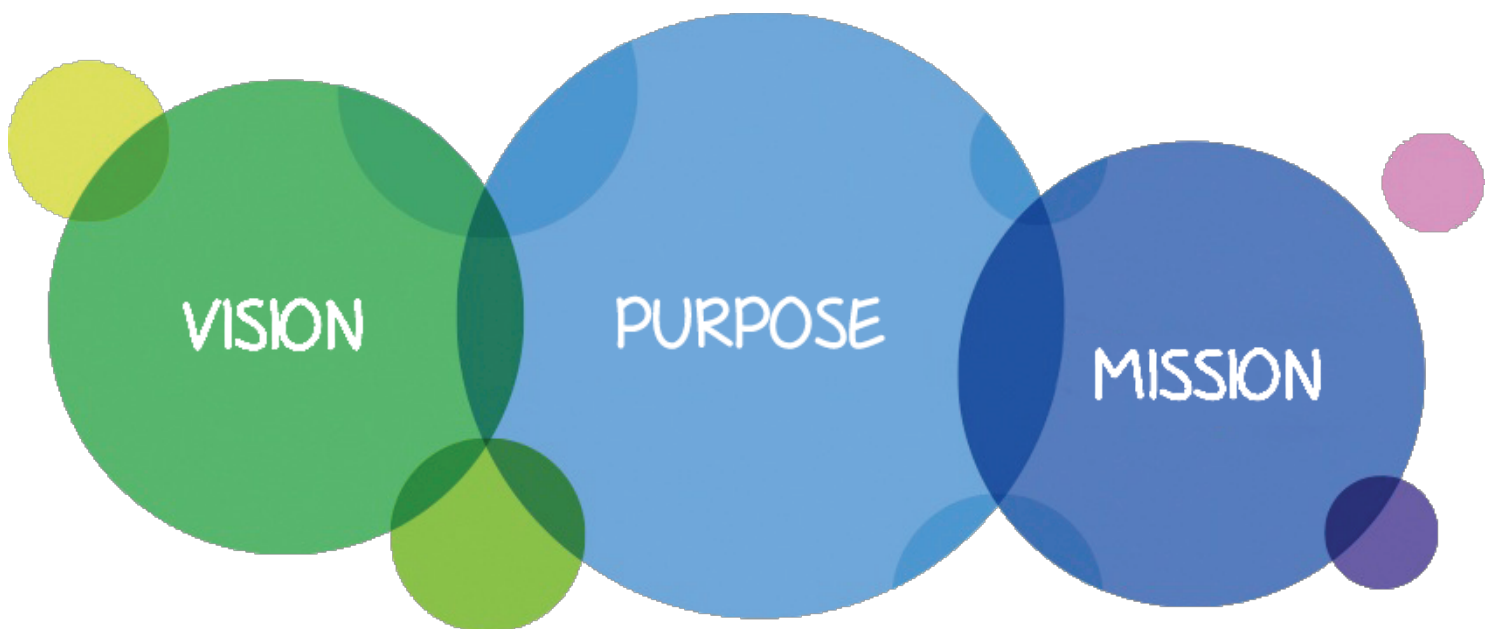
Purpose AL FRANSI COMPLEX FOR ALUMINUM CO. was established in 2006 to form a progressive and dedicated team that can supply innovative aluminum solutions for its clients. Each and every one of our crew is selected based on a professionally created criteria that ensures providing constructive and quality performances to deliver the desired outcomes while securing the customers utmost satisfaction.

MISSION

TO produce accurate and creative results that satisfy our clients demands. Our specialty in Aluminum, all steel types (FR & Non-fr), façade cladding, and glass fits with the demands of modern architecture and construction. Through delicate procedures we promise to leave our customers with the greatest quality and assurance in every project.

VISION

TO produce the best practical solutions in the field of aluminum and façade Cladding.



ABOUT US

We are a reputable company that deals with the production of aluminum. Our first and utmost goal is to make sure that our clients and customers have maximum satisfaction with our products. The quality of our produces is top-notch which makes our customers to be pleased with us to the extent of ordering more products.

WHAT WE DO

We produce high-quality aluminum doors, windows, and other aluminum accessories that are used for the house which would help to create more space in your home. However, those aluminum doors and windows are made in such a way that they have high corrosion resistance. However, they help to further beautify your house. We also produce aluminum composite cladding. This is an outer layer of the building that is made from aluminum. Its purpose is to insulate your home by stopping the heat coming from outside, which will result in keeping your room cool at all times. Furthermore, the high-pressure laminate sheet is part of what we produce. It is used for preventing the ultra-violet rays coming from the sun from having direct contact with your house facilities. It also helps in reducing the maintenance cost of the equipment in your home. We produce glass curtain walls that also helps in reducing the amount of heat coming from the external environment. We pledge that our customers would have nothing less than full satisfaction with our products.

OUR CORE VALUES

- ▲ **Excellence:** We achieve excellence and happiness for ourselves as an aluminium company by creating a value-driven, efficient, and effective solution for our clients.
- ▲ **High-quality:** We produce the best aluminium materials for the betterment of the user. Through innovation and creativity, we have been able to deliver long term solutions on how to minimize the heat coming from the external environment.
- ▲ **Professionalism:** We aim to maintain a maximum level of communication with all our customers and provide our services relating to the professional standards that our clients need.

OUR SERVICES

ALUMINUM DOORS & WINDOWS

Our aluminum doors & windows systems are carefully selected to suit the intended application and optimize energy performances. Aluminum doors and windows generally provide clean lines to work with and can help create an elegant living space. The products we provide are highly resistant to corrosion and require minimal maintenance over their life span. The strength and durability of aluminum means that frames can be narrow, allowing a greater surface area of glass which is why aluminum doors and windows are often favored by those who want to maximize on natural light.



CURTAIN WALL

A curtain wall system is an outer covering of a building in which the outer walls are non-structural, but merely keep the weather out and the occupants in. As the curtain wall is non-structural it can be made of a lightweight material reducing construction costs. When glass is used as the curtain wall, a great advantage is that natural light can penetrate deeper within the building. The curtain wall façade does not carry any dead load weight from the building other than its own dead load weight. The wall transfers horizontal wind loads that are incident upon it to the main building structure through connections at floors or columns of the building.



ALUMINUM COMPOSITE CLADDING

Aluminum Composite Panel (ACP) also Aluminum Composite Material, (ACM) is a type of flat panel that consists of two thin aluminum sheets bonded to a non-aluminum core. ACPs are frequently used for external cladding of buildings (building facades), for insulation and for signage. ACP is mainly used for external and internal architectural cladding or partitions, false ceilings, signage, machine coverings, container construction etc. Applications of ACP are not limited to external building cladding, but can also be used in any form of cladding such as partitions, false ceilings etc. ACP is also widely used within the signage industry as an alternative to heavier, more expensive substrates.



FACADE CLADDING

Façade cladding is a system in the building walls which allows space for a ventilation chamber between the coating and the insulation. This system can reduce energy consumption up to 30% compared to other construction systems. Its functionality comes within being able to withstand various environmental conditions and to reduce heat absorption in warmer months of the year. Façade cladding can also help in determining the outer design of the building and can also be functioned to hide a myriad of imperfections within the walls.



HIGH PRESSURE LAMINATE (HPL)

HPL are highly durable cladding systems that are made in sheets forms and are manufactured in multiple layers under high pressure and temperature. These systems also come in various different forms which allows a lot of room for creativity in the décor of the exterior of a certain building. Hpl sheets have also high resistance to uv rays, water, and moisture functionalities, this helps the system in maintaining the structure of the building and reduce maintenance costs to the minimum.





QUALITY

OUR products and services are processed and delivered at high attainments. Every product leaving our factory is checked thoroughly by our QA/QC department to ensure a sustainable and consistent quality. This is followed up by another check upon installation while receiving feedback from our clients to ensure the job done had fulfilled their satisfaction. Our specifications are verified by certified international suppliers such as Reynaers, Installux, etc. Al Faransi Co. is also certified under ISO 9001 quality procedures as well as ISO 45001 health and safety procedures that guarantee our products and services quality.



OUR MACHINERY

TIGER 352 NC 5.0

electro-pneumatic automatic vertical sawing machine which can operate also in semi-automatic mode, to cut from 60° left to 45° right, with HSS blade. CNC machine with a new controller : MEP 50 with Windows "CE" based. This new PLC has been specifically designed by MEP for the automation of its range of products.



A FEW FEATURES:—

7" touch screen display operator interface and push buttons for all functions of the sawing machine.

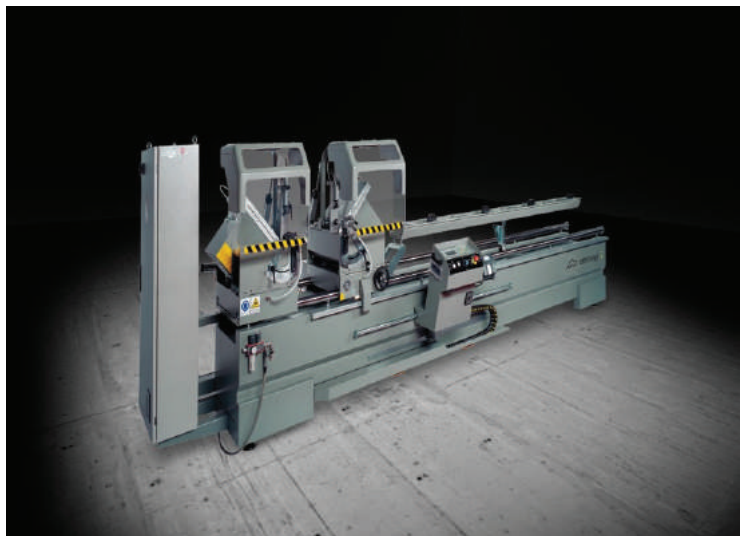
It is simple and intuitive, it guarantees a reliable use and it controls all cutting parameters in real time- Console with all centralized controls, installed on an articulated arm to follow the operator in every operating position for the controls and the EMERGENCY

EMMEGI CLASSIC MAGIC

The Emmegi twin-head cutting-off machines boast of exceptional performance characteristics, including ruggedness and reliability.

This machine is ideal for cutting aluminum and PVC bars in various thicknesses and at different angles. Latest generation machines which can make a considerable contribution to the production cycle thanks to their high standard of accuracy and user-friendliness.

Classic Magic is an electronic twin-head cutting-off machine with automatic traversing of the moving cutting head. The machine can be provided with an industrial label printer to enable profile identification



CNC MACHINING CENTRE

With 4 controlled axes, designed for machining bars or parts made of aluminum, PVC, light alloys in general or steel up to 2 mm. It is equipped with two 4-place tool magazines on board machine and it is able to machine on 3 sides of a section of 170 mm x h210 mm. It can work bars up to 4 m long. The 4th CN axis allows the electro spindle to continuously rotate to from 0° to 180° to perform the work on the profile contour.

Moreover it is equipped with a moving work plane for easier workpiece loading/unloading; this also allows considerable increase in the machinable section.



VARIABLE RAKE HYDRAULIC GUILLOTINE SHEAR – ERMAKSAN

Known as one of the top world wide manufacturers in the sheet metal industry, proudly announces its latest shear model to the market, which we call it the Variable Rake Hydraulic Guillotine Shear 'CNC HVR' Blade gap, cutting angle & cutting length are adjusted based on material selection and thickness automatically. The machine provides flexibility for different production parts and reducing idle time through high efficiency.



ERMAK 3100 X 150

Chrome coated cylinders are machined with 0,001 mm precision and pistons are specially hardened. Original clamps are user friendly and machined with high precision. Front support arms are slidable along machine length and easy to adjust. Compact and well-known brand HOERBIEGER hydraulics are produced according to CE standards. Two photocells on sides for rear guard. Fast tool tightening. Optic linear scales are sensitive up to $\pm 0,01$ mm. Quick release clamping system.

Pro cam type top clamps can be easily loaded & unloaded. Synchronized working cylinders will give you the best bending result with its perfect repeatability ratio. 2 axis ultra strong back gauge system (X=800 mm and R), with $\pm 0,01$ mm. repeatability, moves along rails and balls crew, bending length controlled by CNC controller, foldable back gauge fingers for reverse bending applications.

Multifunctional and highly programmable, 2D CYBELEC DNC 600 CNC controller. SIEMENS electrical system. Automatic axis referencing when machines turned on. Side guard is standard meeting CE regulation.



THE PRATIX N15

The Pratix N15 is a versatile and cost effective CNC machining center with a closed gantry frame and multi-function aluminum table. Designed for easy net-line integration. the Pratix N Series from SCM Group offers fully customizable sizing, boring and routing solutions for a wide variety of manufacturing applications.

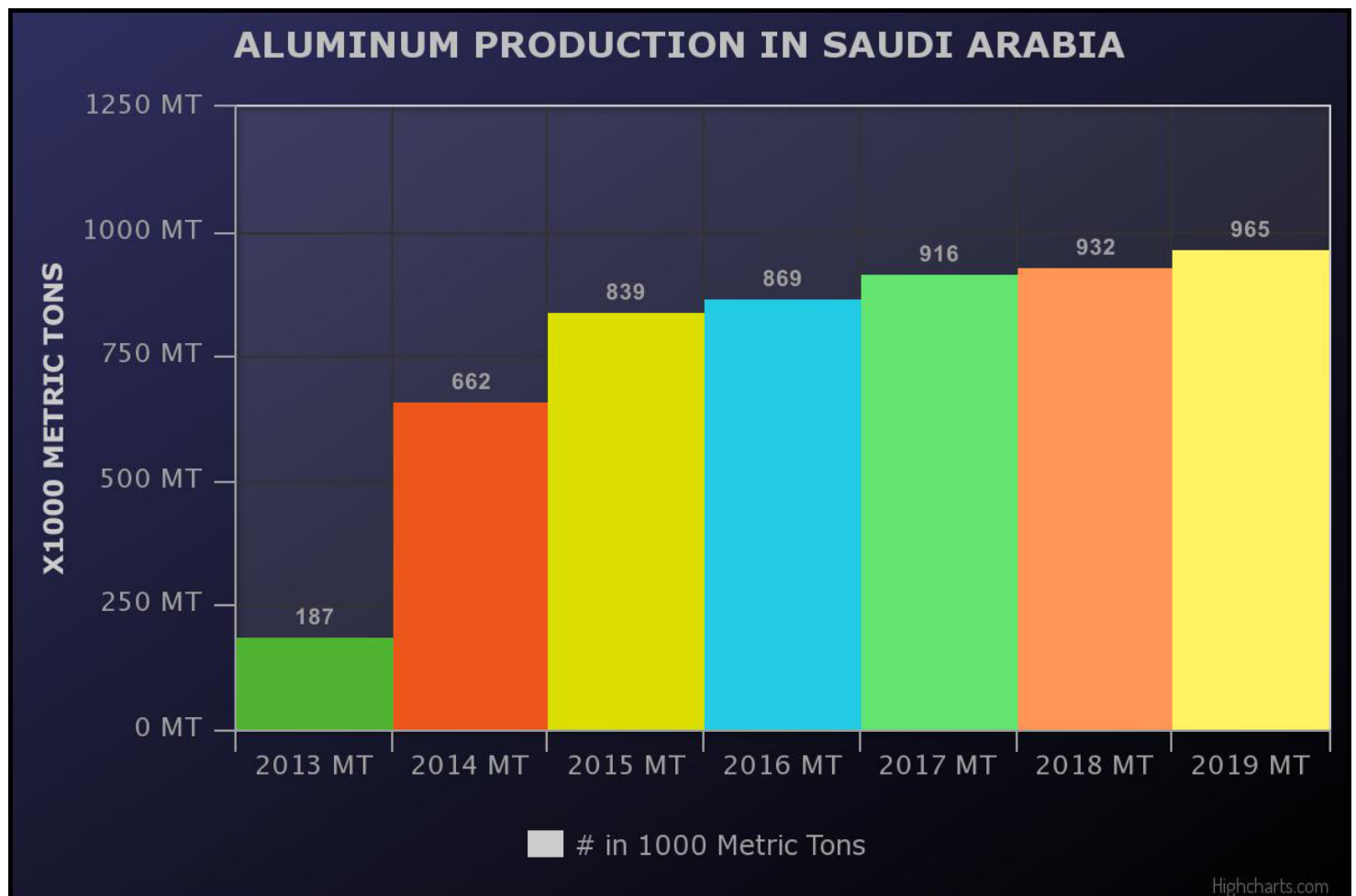
The Pratix N15 (5' x 12') flat table CNC router is available in the following configurations: -

- » Pratix N15 C NBR (5x12) - with (left to right) rake
- » Pratix N15 C NB Preset (5x12) - preset (right to left) cell
- » Pratix N15 D CELL (5x12) - nesting cell (right to left)

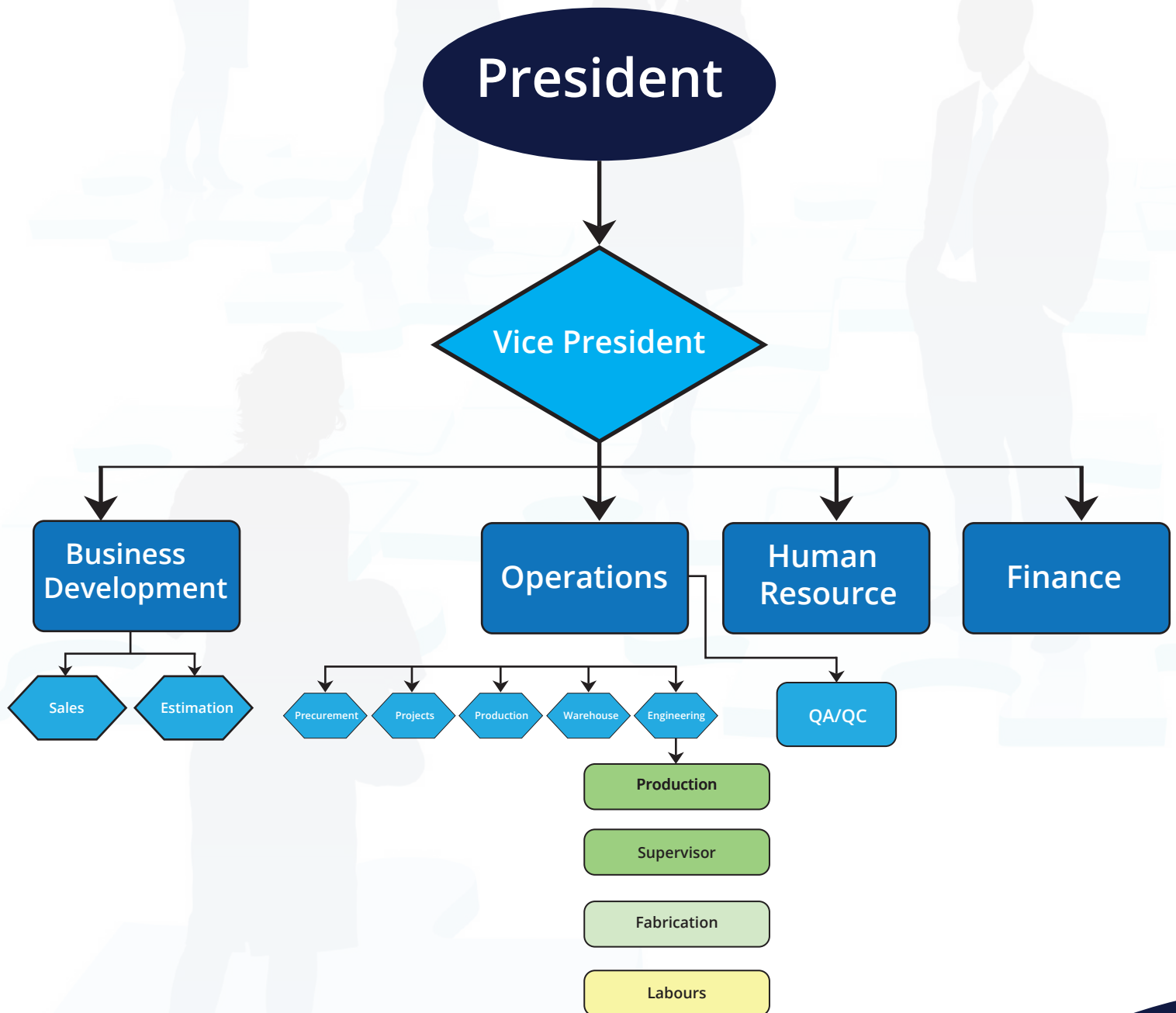


INDUSTRY INFORMATION

The Aluminum market in Saudi Arabia is a huge growing one valued at \$1.8 Billion USD in 2018. The market is expected to continue growing and reach \$2.4 Billion USD by the year 2026. This growth is created by the increased presence of electrical companies and the rising demand in foil and packaging industries. The Aluminum production in Saudi Arabia has ascended by 416% between the years of 2013 and 2019. This significant increase provides a huge opportunity for the use and recycling of Aluminum to satisfy both construction and environmental purposes.



AL FRANSI COMPLEX FOR ALUMINUM CO.





WHY US?

- ▲ Consistent Quality
- ▲ Authorized by world class fabricators
- ▲ Our wide experience in the Industry
- ▲ Step by Step service from Idea to installment
- ▲ Safe work environment
- ▲ On time Delivery

A photograph of a person's hands holding a wooden-framed chalkboard. The person has red nail polish. The chalkboard has the text "WHY CHOOSE US?" written in white, bold, capital letters. The person is wearing a white shirt and a dark tie.

**WHY
CHOOSE
US?**

CERTIFICATION

QuayAudit

REGISTRATION CERTIFICATE

This certificate confirms that the management systems of
Al Fransi Complex for Aluminum Co.
 P.O. Box 31847, Al Khobar 31952,
 Kingdom of Saudi Arabia
 have been audited and approved by
 Quay Audit UK Ltd to the following management standard:
ISO 45001:2018
 The approved management systems apply to the following scope:
 Fabrication & Installation of Aluminum Doors, Windows,
 Glazing, Curtain Walls & Partition Aluminum and Steel & Stainless Steel
 Fire Protection Profiles and Composite Panels

This certificate is restricted to those scopes of business activity described
 in the internationally recognised NACE Codes listed below:

2512 & 4334

Original Approval	23 September 2020
Current Certificate	23 September 2020
Certificate Expiry	23 September 2023
Registration Number	4157066

On behalf of Quay Audit UK Limited *Birone*





www.abcf.com
www.global-accreditation.org
www.irqao.com

This is an accredited certificate issued and for issue by Accreditation Service for Certifying Bodies (Europe) Limited who have assessed Quay Audit UK Limited against defined criteria and in conformance of ISO 17021:2011 'Conformity Assessment - Requirements for bodies providing audit and certification of management systems'. This certificate is only valid when confirmed by the register listed in the International Register of Quality Assurance Organisations: www.irqao.com

QuayAudit

REGISTRATION CERTIFICATE

This certificate confirms that the management systems of
Al Fransi Complex for Aluminum Co.
 P.O. Box 31847, Al Khobar 31952,
 Kingdom of Saudi Arabia
 have been audited and approved by
 Quay Audit UK Ltd to the following management standard:
ISO 9001:2015
 The approved management systems apply to the following scope:
 Fabrication & Installation of Aluminum Doors, Windows,
 Glazing, Curtain Walls & Partition Aluminum and Steel & Stainless Steel
 Fire Protection Profiles and Composite Panels

This certificate is restricted to those scopes of business activity described
 in the internationally recognised NACE Codes listed below:

2512 & 4334

Original Approval	23 September 2020
Current Certificate	23 September 2020
Certificate Expiry	23 September 2023
Registration Number	4157065

On behalf of Quay Audit UK Limited *Birone*





www.abcf.com
www.global-accreditation.org
www.irqao.com

This is an accredited certificate issued and for issue by Accreditation Service for Certifying Bodies (Europe) Limited who have assessed Quay Audit UK Limited against defined criteria and in conformance of ISO 17021:2011 'Conformity Assessment - Requirements for bodies providing audit and certification of management systems'. This certificate is only valid when confirmed by the register listed in the International Register of Quality Assurance Organisations: www.irqao.com
 Crow House, 8 St. Julians Place, Sharnbrook, Shipham, CV1 3XL | (+44)1453 261 677 | post@quayaudit.co.uk | www.quayaudit.co.uk

OUR AUTHORIZATIONS

The logo for Forster, featuring the word "forster" in a bold, blue, lowercase sans-serif font.The logo for Aluminium Installux, featuring the word "ALUMINIUM" in a small, all-caps sans-serif font above a red square containing a white stylized "G" shape. Below the square, the word "INSTALLUX" is written in a bold, all-caps sans-serif font.The logo for TRESPA, featuring the word "TRESPA" in a large, all-caps serif font. Above the letters "R", "E", "S", and "P" are vertical lines of varying heights. A registered trademark symbol (®) is located to the upper right of the "A".